

# IZANAMI

By Michael Rogers

伊邪那美命

# CONCEPT

Izanami is a contained horror drawing influences from the J-Horror classics such as Ju-On: The Grudge and Ringu mixed with the Western style of horror such as Smile and Evil Dead Rise. It combines creepy haunting with full on bloody gore and body horror.

# LOGLINE

When a curse traps a rebellious young woman inside her apartment, she must fight against a former Japanese goddess intent on her punishment before it costs her life.

# SYNOPSIS

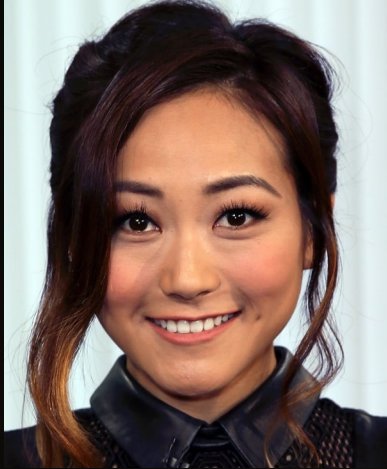
After cheating on her semi-long-term girlfriend, Barb Masaki is cursed. The ancient curse calls upon Izanami, a former Japanese goddess to avenge those who have betrayed their loved ones. Initially, Izanami stalks only from the shadows, afraid of the light. When finally she strikes, Barb escapes to discover she is trapped in her apartment, hell literally is outside her door.

Barb's further attempts at escape and calls for help all fail but with new information she turns to attack in the form of an exorcism. In a fleeting moment of triumph, Barb revels in her victory. However, far from exorcised, Izanami has become far more potent and proceeds to wreak agonising vengeance on Barb's body. As her hope dwindles, Barb is left with only one viable option to end the torment, she brings a knife to her wrist.

Enter Barb's girlfriend, Kim, in the nick of time to prevent this drastic action. Kim's scepticism of the curse is shattered when she falls victim to it too. With renewed determination, Barb hunts for a fresh way to be rid of Izanami and to save Kim, even offering up herself as a sacrifice to halt the devastation. Ultimately, the same conclusion is reached, a pyrrhic victory their only recourse. Before their final moments, Barb confesses the reason behind her betrayal. As both lay dying, a mutual forgiveness is found and a glimmer of hope emerges.



# CHARACTERS



BARB  
MASAKI

A young woman who has suffered loss. First her parents to a tragic accident and then her younger sister to illness. Both of which have left her with wounds that will never heal. Despite the risk of another loss, her relationship with Kim is on the verge of serious.



KIM  
ANDERS

A bit of a weeb (Japanese culture fan) and Japanese history major. Forgiving to a fault, Kim always puts others before herself. There is however, one thing she will not abide, infidelity.



IZANAMI NO  
MIKOTO

A (former) goddess in Japanese mythology, she, along with her twin brother Izanagi were the final generation of deities. The two are responsible for creating the islands of Japan. After dying in childbirth, Izanami became the ruler Yomi, the land of the dead.

MISHA

Kim's friend and general drama magnet. How much she attracts versus how much she creates is open to debate.

SARA

Kim's roommate and although one to let loose, she will return to a level-head when the situation requires.

POTDASH DUDE

He delivers weed products to your door.





# THANK YOU FOR READING

Semi-narrative mood trailer video

[https://www.dropbox.com/scl/fi/hop7a29r9m6l6pgy6mmmh/Izanami\\_semi-narrative\\_mood\\_trailer1.mp4?rlkey=c9jt8jboahzjxelxpc6vgwdcw&dl=0](https://www.dropbox.com/scl/fi/hop7a29r9m6l6pgy6mmmh/Izanami_semi-narrative_mood_trailer1.mp4?rlkey=c9jt8jboahzjxelxpc6vgwdcw&dl=0)

Contact

[mike.rogers.pm@proton.me](mailto:mike.rogers.pm@proton.me)