



Happily Ever Again

FEATURE PITCH DECK

LOGLINE

A married couple on the brink of separation unknowingly reignites their romance through a dating app, rediscovering their love while believing they're falling for someone new.

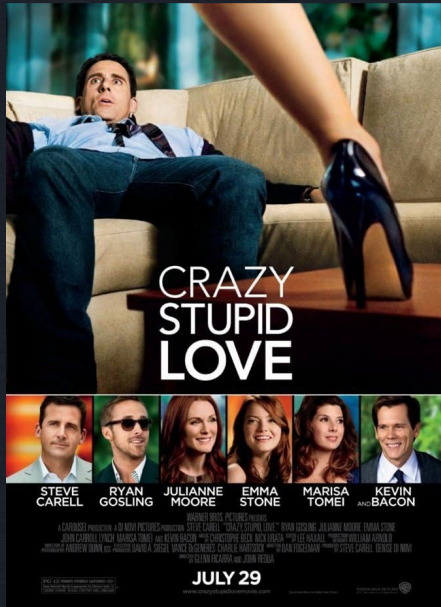
SYNOPSIS

Darius Ross, a disillusioned artist in his 40s, and his wife Celeste, a high-powered PR professional, are trapped in a distant marriage. In a bid to find excitement, Celeste, on the advice of her friend Soo-jin, creates an anonymous dating profile using the prompt, "Do you like Piña Coladas?" Unbeknownst to her, Darius stumbles across her profile and starts an online flirtation without recognizing her. As they unknowingly rekindle the spark they've lost, both struggle with guilt and the emotions of rediscovering a partner they've grown apart from.

When the truth of their hidden identities surfaces, the couple faces a dramatic confrontation that lays bare their disappointments. Ultimately, Darius and Celeste choose to confront their problems and rebuild their relationship, sharing piña coladas on the beach as they embrace a hopeful new beginning.



SHOW CROSS



MEETS



MEETS



DARIUS ROSS

MAIN CHARACTER

Darius Ross, a once-vibrant Black artist in his 40s, struggles with grief and loneliness after the death of his father, which has distanced him from his wife and left him uncertain about his future.

Known for movie posters and album covers, he's now losing work to AI-generated art and feels his career slipping away. He turns to a dating app in hopes of finding a new romantic connection to escape his sadness, yet he clings to memories of his past and isolates himself. Darius wants to overcome his grief, reclaim his passion for art, and either repair his marriage or find closure, but his lack of motivation and emotional turmoil hold him back, making it difficult to move forward.





CELESTE ROSS

MAIN CHARACTER

Celeste Ross, a stunning woman in her 40s with a polished, professional demeanor, is a sharp PR executive who balances chaotic clients with ease while maintaining a composed exterior. Her long, blonde hair and tailored business suits reflect her confidence, but underneath, she's struggling with loneliness as her marriage to Darius falls apart due to his prolonged depression.

Yearning for the excitement and passion they once shared, Celeste is torn between staying loyal or finding a new partner who can provide the emotional connection she craves. Though she's considering moving on, she remains conflicted, holding onto the hope of rekindling what they once had.

RAFAEL BAMBA

SUPPORTING CHARACTER

Rafael Bamba, in his 60s, is a striking figure with slicked-back silver hair, a meticulously groomed pencil-thin mustache, and sharp black suits tailored to his gaunt frame. Known for his piercing eyes and mischievous wit, Rafael exudes unapologetic style, blending old-world charm with modern edge.

A celebrated director of eccentric films that challenge mainstream tastes, his off-camera persona is equally captivating, marked by acerbic humor and a love for life's peculiarities. Whether mixing a stiff gin cocktail or entertaining with his cutting remarks, Rafael leaves an indelible impression, reveling in his role as a provocateur.





JEF “ONE F” ROBINSON

SUPPORTING CHARACTER

Jef, in his 30s, is a laid-back, sun-kissed surfer with a broad build and a 1970s-style handlebar mustache. His casual wardrobe of board shorts, tank tops, and vintage sunglasses complements his warm, effortlessly cool demeanor.

As a licensed psychologist, Jef’s unconventional therapy involves reconnecting patients with nature through hiking and surfing, often meeting clients virtually from the beach or forest. He shares a unique father-son dynamic with filmmaker Rafael Bamba, whom he met during college while acting in one of Rafael’s quirky films. When Jef meets Darius, he senses his loneliness and offers to teach him to surf, believing the ocean can heal even the most burdened souls.

SOO-JIN KIM

SUPPORTING CHARACTER

Soo-Jin Kim, a chic Korean American woman in her 30s, is known for her bold, tailored dresses and sharp instincts in the PR world, specializing in managing K-pop stars and helping them break into the American market. Despite her confidence and success, she carries a playful wit and a clumsiness that adds a layer of relatability to her polished exterior. With her glossy black hair and confident stride, she's a powerhouse with a biting yet charming sense of humor.

Soo-Jin is deeply loyal to her best friend Celeste, pushing her to find excitement in life and teasing her into trying a dating app, while balancing her whirlwind dating history with genuine concern for Celeste's happiness.





LANDO ROSS

SUPPORTING CHARACTER

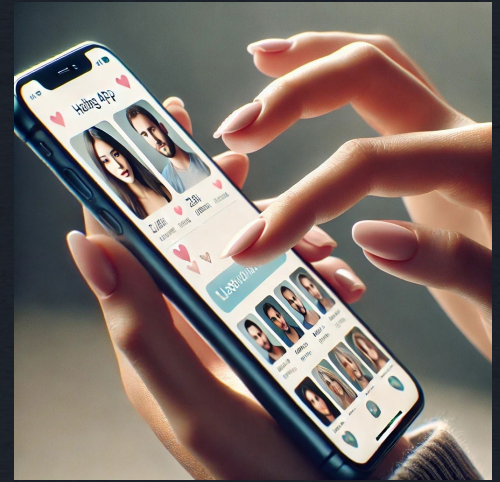
Lando Ross, an 18-year-old college freshman at UC Berkeley, has a natural charisma, blending his parents' features with an easygoing style of jeans, vintage tees, and hoodies. Double-majoring in film and journalism, he's driven by a passion for storytelling and a curiosity that makes him stand out.

Like his father, Darius, Lando is warm, thoughtful, and naturally charismatic, sharing a close bond built on mutual respect and laughter. Though optimistic and upbeat, Lando also has a maturity beyond his years, serving as a calm and grounded presence among his friends while exploring his love for cinema and media.

TONE

The tone of "Do You Like Piña Coladas?" is a blend of romantic comedy and heartfelt drama, using humor, witty banter, and genuine emotion to explore themes of rekindling love and self-discovery in a struggling marriage.

The feature balances lighthearted moments with deeper, more poignant scenes, making the story both entertaining and emotionally resonant.





Do You Like Piña Coladas?

Tony Wilson:

E: [asktonywilson@gmail.com]

P: [909-790-9164]

Curt Sell:

E: [curtsell@gmail.com]

P: [951-990-5716]