

THE BEAUTIFUL BEAST



In the aftermath of the Holocaust, the trial of SS guard Irma Grese unveils not only her atrocities, but also the haunting question of how a young woman could commit such acts.

SYNOPSIS

This script earned a spot in the top 10% of the 2025 PAGE screenwriting contest.

Set against the harrowing backdrop of World War II, 'The Beautiful Beast' chronicles the chilling story of Irma Grese, one of the youngest female guards at the infamous concentration camps of Auschwitz and Bergen-Belsen.



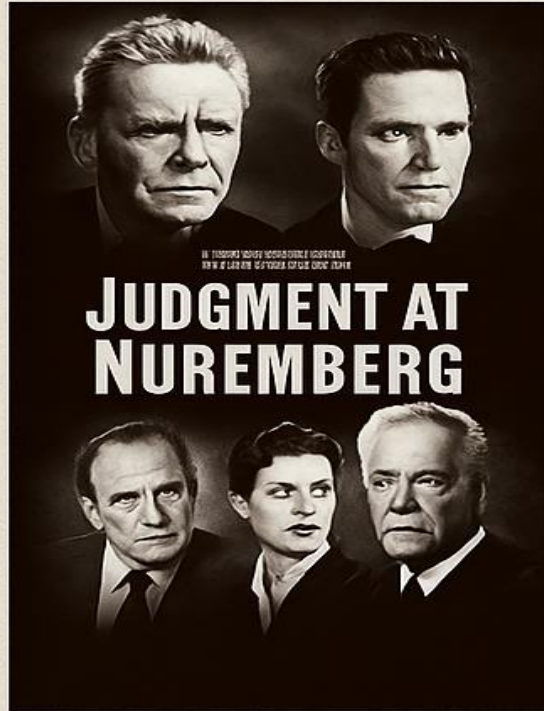


THEME & TONE

Gritty and emotionally intense, the film is more than just a historical account—it is a deep, psychological exploration of evil, power, and the haunting impact of war and genocide.



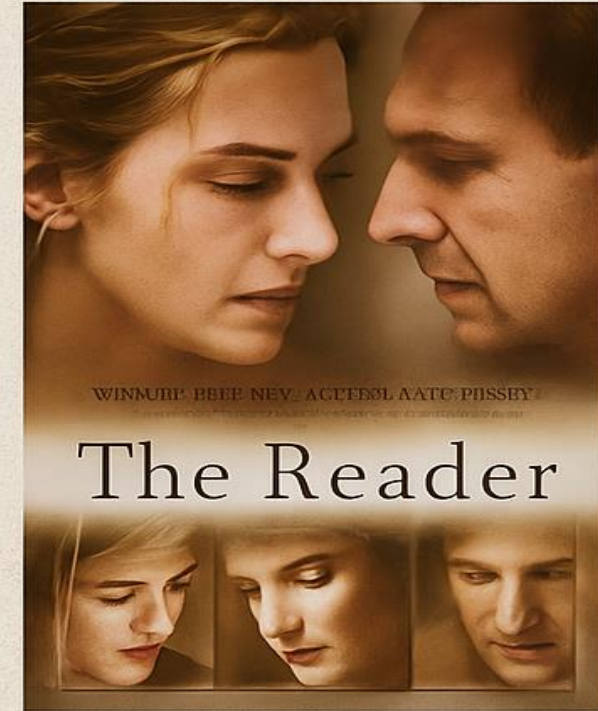
COMPARATIVE FILMS



Judgment at
Nuremberg



Schindler's List



The Reader

BUDGET & ROI

Judgment at Nuremberg	Schindler's List	The Reader
\$3 million	\$22 million	\$322 million
\$10 million	\$322 million	\$108 million

WHY THIS FILM MUST BE MADE

The Holocaust stands as one of humanity's darkest chapters, and Irma Grese's story is inexorably intertwined with this atrocity. The film serves as a sobering reminder of the depths of human cruelty during war and genocide, insisting that we remember and educate so that history does not repeat itself.

Moreover, the presence of a strong female lead in a story of such magnitude offers a unique perspective. Irma's trial delves into themes of power, indoctrination, and moral responsibility.

INTENDED AUDIENCE

'The Beautiful Beast' is tailored for viewers with a keen interest in Holocaust history, WWII dramas, and character-driven narratives. It appeals to those who seek profound, reflective cinema that grapples with moral complexity and the darker aspects of human nature.





AWARD
POTENTIAL

BEST FEMALE
ACTRESS

BEST FILM

CONTACT

GARY J. ROSE

grose1@pacbell.net

(530) 613-9232