

INKED IN BLOOD

WRITTEN BY PAUL CORRIGELLI





LOG LINE

A tortured man returns to the town he ran away from as a child to exact his revenge on all those who wronged him and face the one man he fears the most. His father.

SYNOPSIS

In a desolate, unremarkable town in the mid-eighties, Aesop Quarrels grew up living a tortured existence. His father, Sheriff Edsall Quarrels, was a cruel and vindictive man on his best of days. More so after the birth of his "freakish albino son"(his words). Amid the constant abuse he endured while growing up, Aesop was forced to witness his mother's abuse at the hands of his father's weekly poker buddies-punishment for birthing such an abomination.

After receiving news of his mother's apparent suicide, the fires of suppressed rage and vengeance have been stoked. Aesop returns a tortured soul. Symbolic tattoos adorn both his arms. One side depicting scenes of Hell, the other scenes of Heaven - a badge to the horrific suffering they both endured.

One by one, he will make them pay, not only to mend the shattered pieces of his own life but for his mother's suffering as well. Past horrors begin to unfold as he embarks on this twisting trail that will ultimately lead to the one man responsible for their suffering. As he struggles with the terrible weight of what he's done, and the price that he will eventually have to pay, Aesop heads towards a final showdown with his father and, in the process, will uncover a hidden family secret that threatens to tear him apart - he has a half-sister named Candice.

W R I T E R / D I R E C T O R S T A T E M E N T

The central theme of Inked In Blood is revenge. Aesop is an anti-hero who believes that the only way to exorcise his own demons are by killing the man who put them there. His father.

Aesop's abusive past is revealed in fast, frenetic flashbacks. These quick glimpses help illustrate not only his suffering, but his mother's suffering at the hand of his ruthless father.

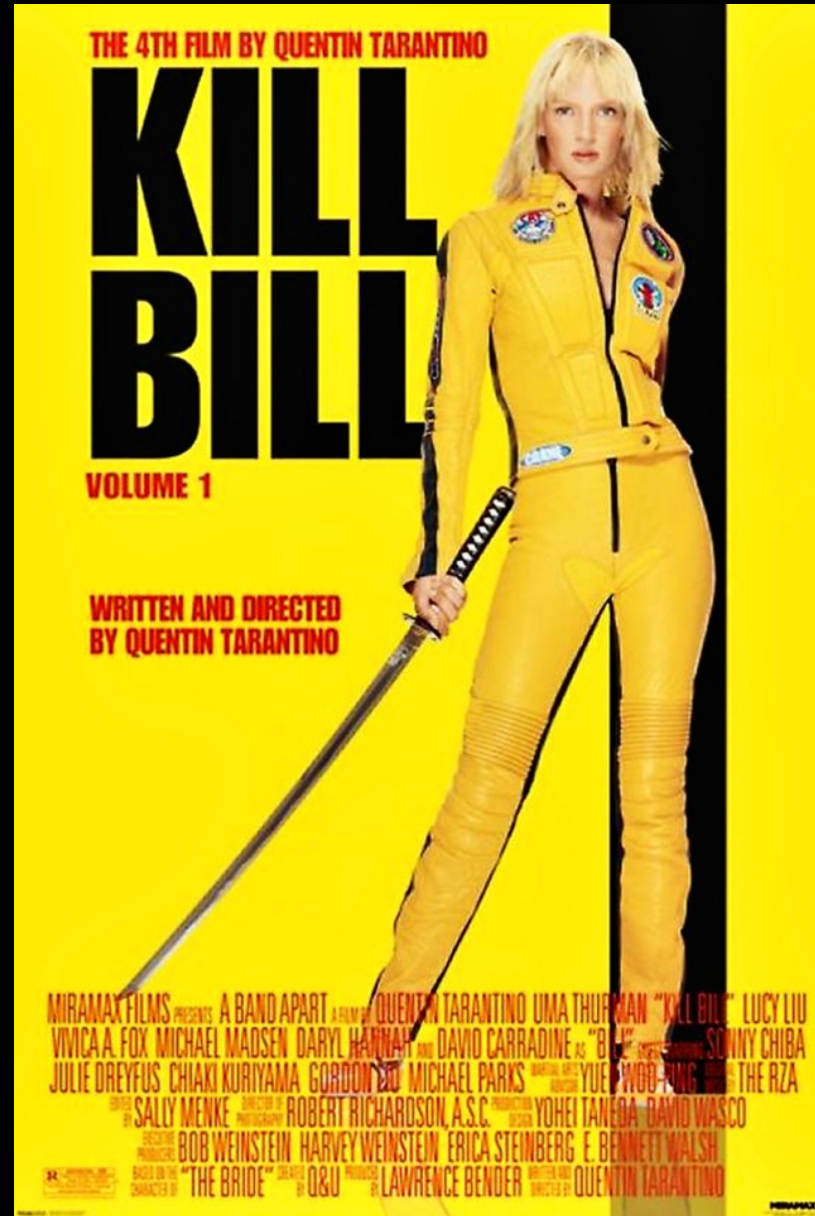
Aesop's tattoos are integral to the story. One side depicting images of Heaven, one side Hell. Although there is no religious message to the story, they are a constant reminder of Aesop's struggles, one side representing his mother, the other his father.

T O N E

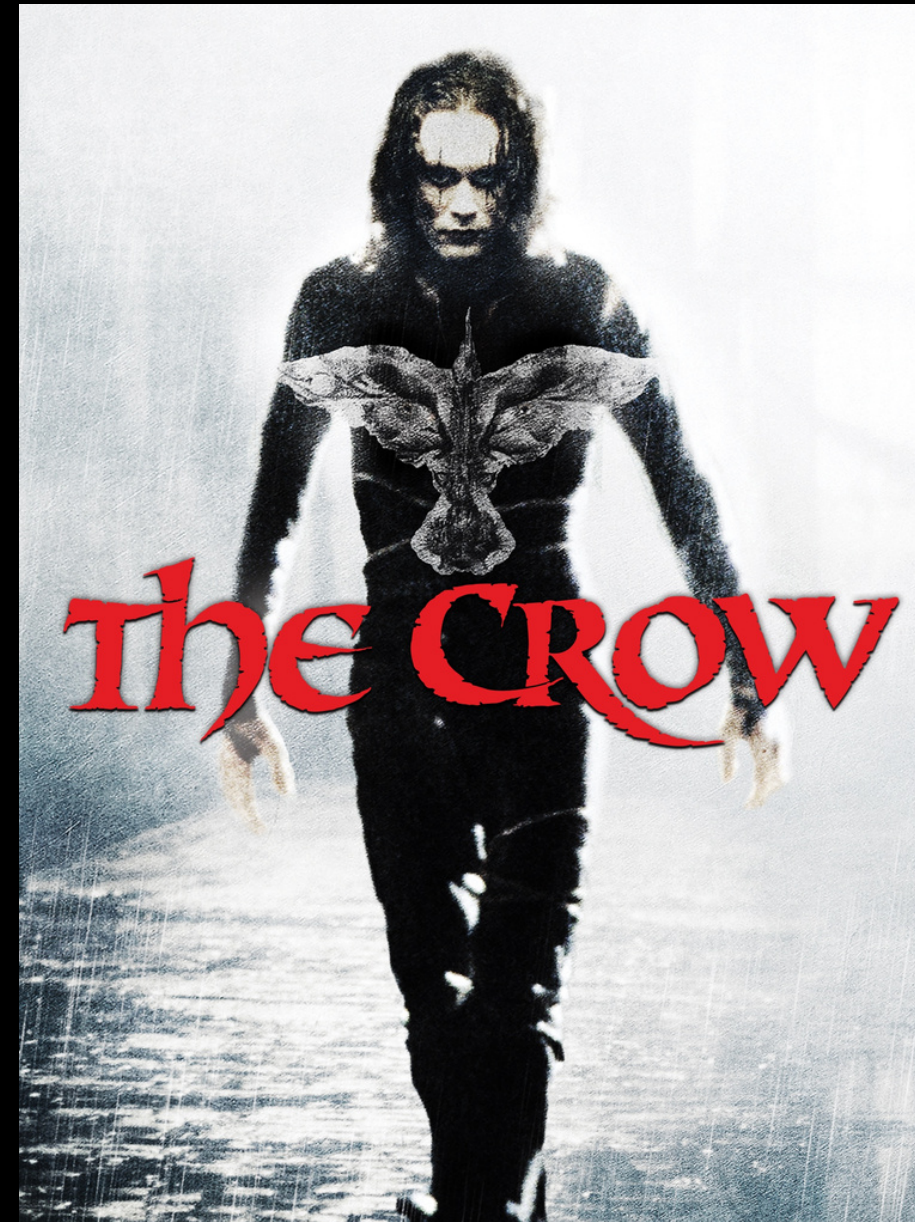
Neo-noir

Small town

COMPS



Kill Bill



THE CROW



FARGO

AESOP QUARRELS



Aesop has lived a life of abuse and pain. The only person to ever really love him was his mother, Annabel. It was his mother who made him promise to run away and leave all this misery behind, but when he receives word of his mother's suicide, the fires of rage and hate are stoked. Aesop knows his mother would never take her own life, and now he's on his way back to the town he swore he'd never return to in order to make the one man responsible for all their suffering pay.



Bill Skarsgard



Jamie Campbell Bowen



Evan Peters



Dane DeHaan

SHERIFF EDSALL QUARRELS

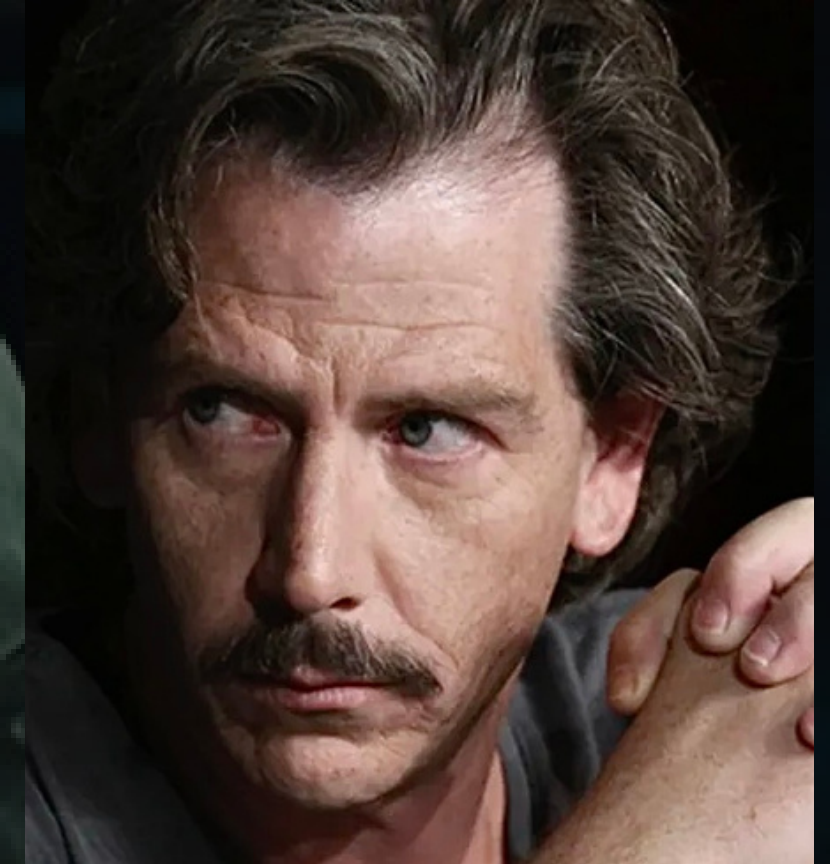
Edsall is a mean bastard who believes that he's the only one who can do anything right. He's the Sheriff of a small, truly unremarkable town, where his power is absolute. The day Aesop was born was the worst day of his life. This was not the son he wanted, and his constant abuse is a reminder to his son that he was a mistake.



Tim Blake Nelson



Woody Harrelson



Ben Mendelsohn

DEPUTY JJ

JJ is not the sharpest tool in the shed. For reasons only he could explain, he is full of self-confidence and truly believes that he is the "shit" in his uniform.

JJ went to high school with Aesop but feels like his superior because of his job. He is extremely loyal to Edsall - who treats him like an idiot, because he knows very little about who the man truly is.



Mackenzie Crook



Jay Baruchel



Daniel Radcliffe

JASON KIEL

Jason was a High School jock who was popular with the girls and spent much of his free time bullying kids like Aesop with no accountability. His girlfriend Kim was equally guilty of this bad behavior, and between the two, they were responsible for Aesop dropping out of school after being stabbed by Jason. Now a divorced police detective, Jason lives a quiet, unfulfilling existence alone until Aesop suddenly reappears in his life.



Josh Hartnet



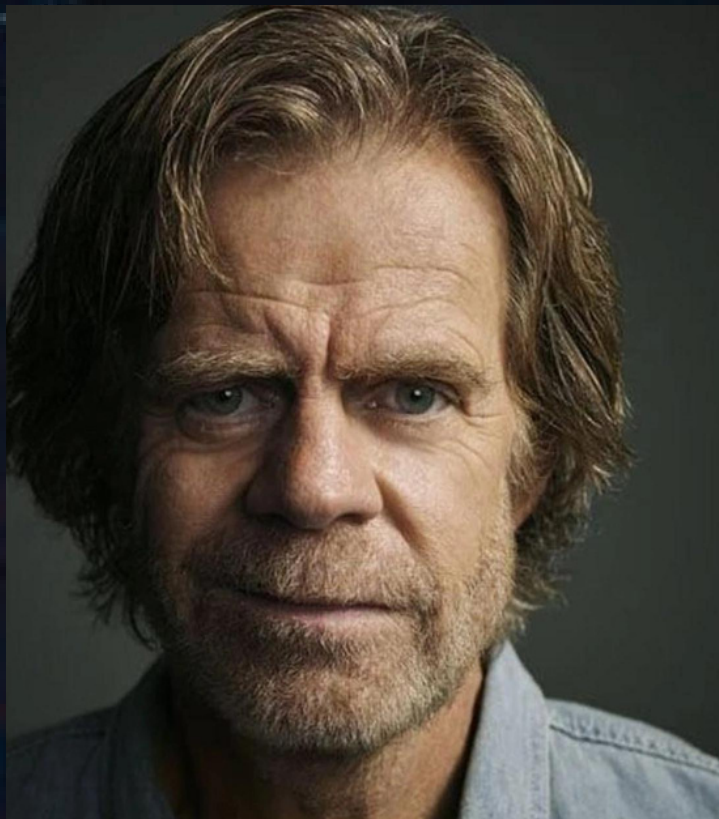
Nicholas Hoult



Charles Melton

DW CUTLIFF

DW is the lecherous owner of a rundown motel and cafe on a lonely stretch of highway outside of town. He treats his daughter Candice like a servant and refuses to reveal who her mother is. It's a secret he shares only with Edsall, but secrets never stay hidden forever, and this one is going to change lives.



Willian H Macy



Ray McKinnon



John Hawkes

CANDICE CUTLIFF

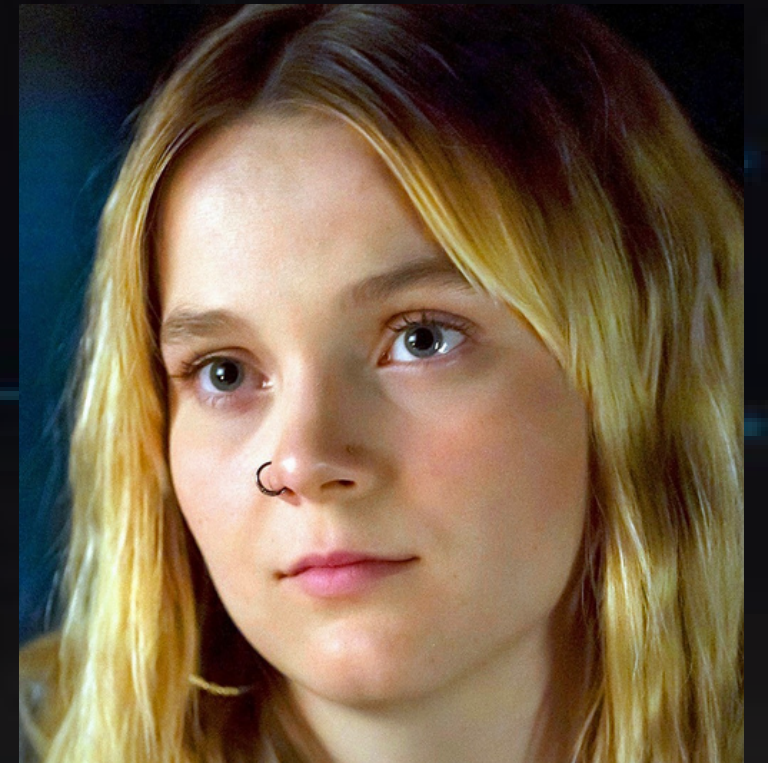
Candice is a sweet girl, stuck in a tragic existence. She is DW's daughter and is destined to live out her life tending to customers in her father's Motel cafe. Candice is stunningly out of place in this quagmire of inbred and desolate souls, a shining star that defies the logic of her paternal origins. Candice has never met her mother; DW has forbidden it. When Aesop comes to town, her life will change forever, and all of her father's secrets will be revealed.



Lulu Wilson



Chloe Grace Moretz



Vivian Olyphant

KIM BARREL

Kim was the popular girl in high school who dated the star quarterback, Jason Kiel. With that popularity came an air of superiority and a bit of a mean streak, at least when it came to the strange kid who had a crush on her, Aesop Quarrels. When the bullying goes too far, Kim manipulates Jason into stabbing Aesop, causing him to quit school and never return. Years later, Kim finds herself divorced and working as a waitress at a small diner in the middle of nowhere, her life stuck in the sand, until one day, the front door of the diner chimes, and Aesop steps through.



Ariana Greenblatt



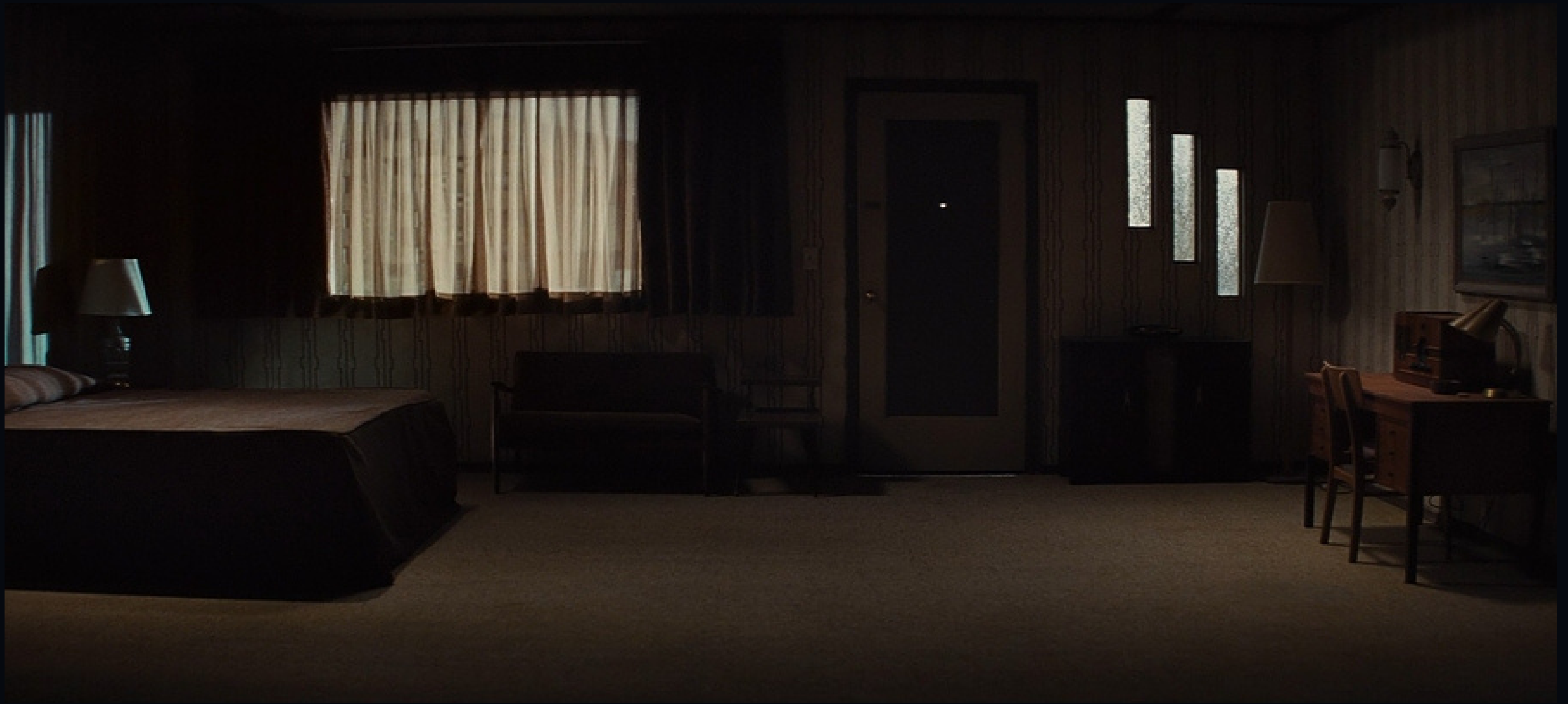
Joey King



Lovina Yavari









COLOR TV *by* RCA

MOTEL























"The monster that lived inside me... that monster was you."

-Aesop Quarrels

C O N T A C T

Paul Corricelli

camcorri@yahoo.com

818-599-3317

“The monster that lived inside me... that monster was you.”

