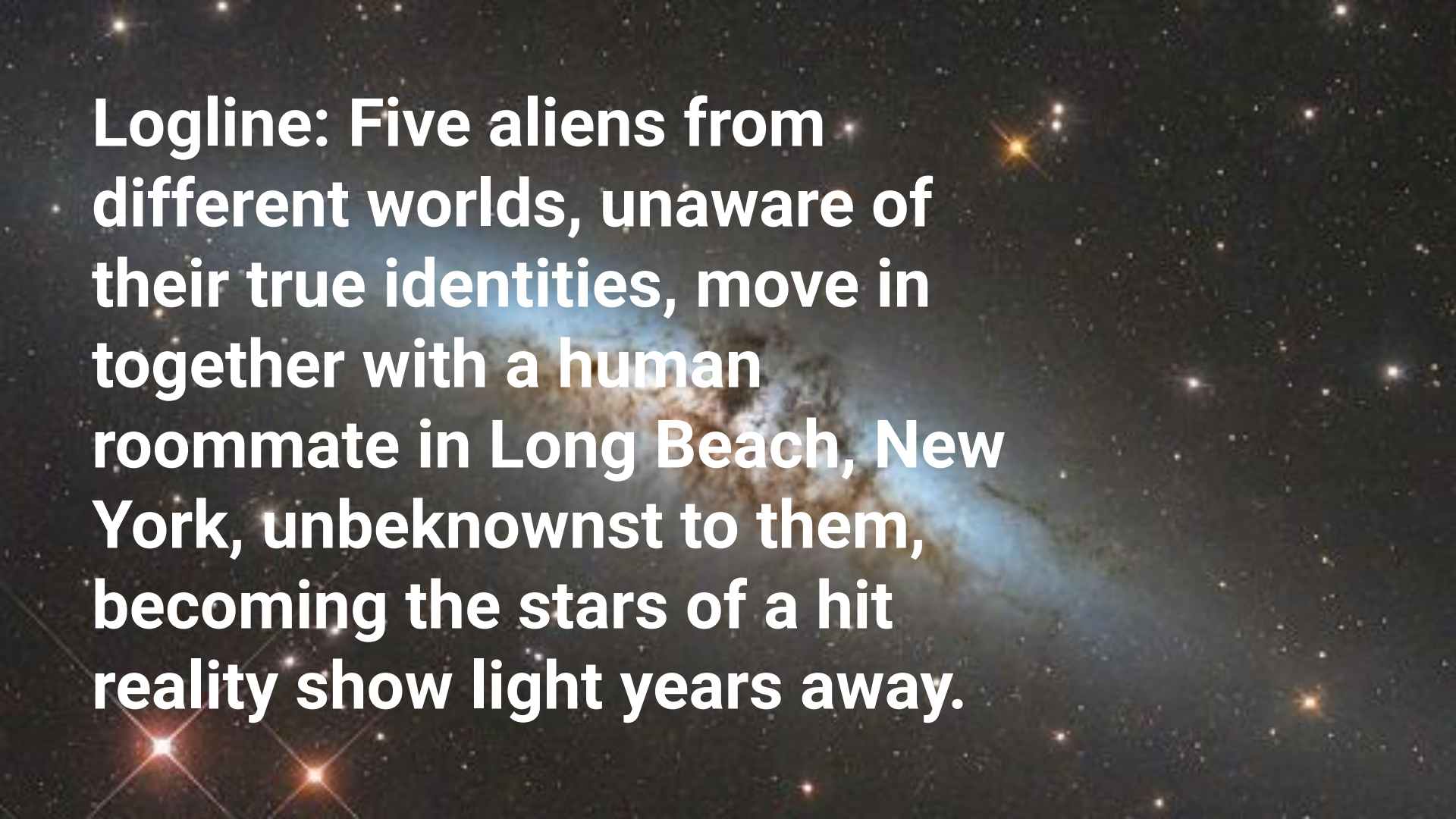
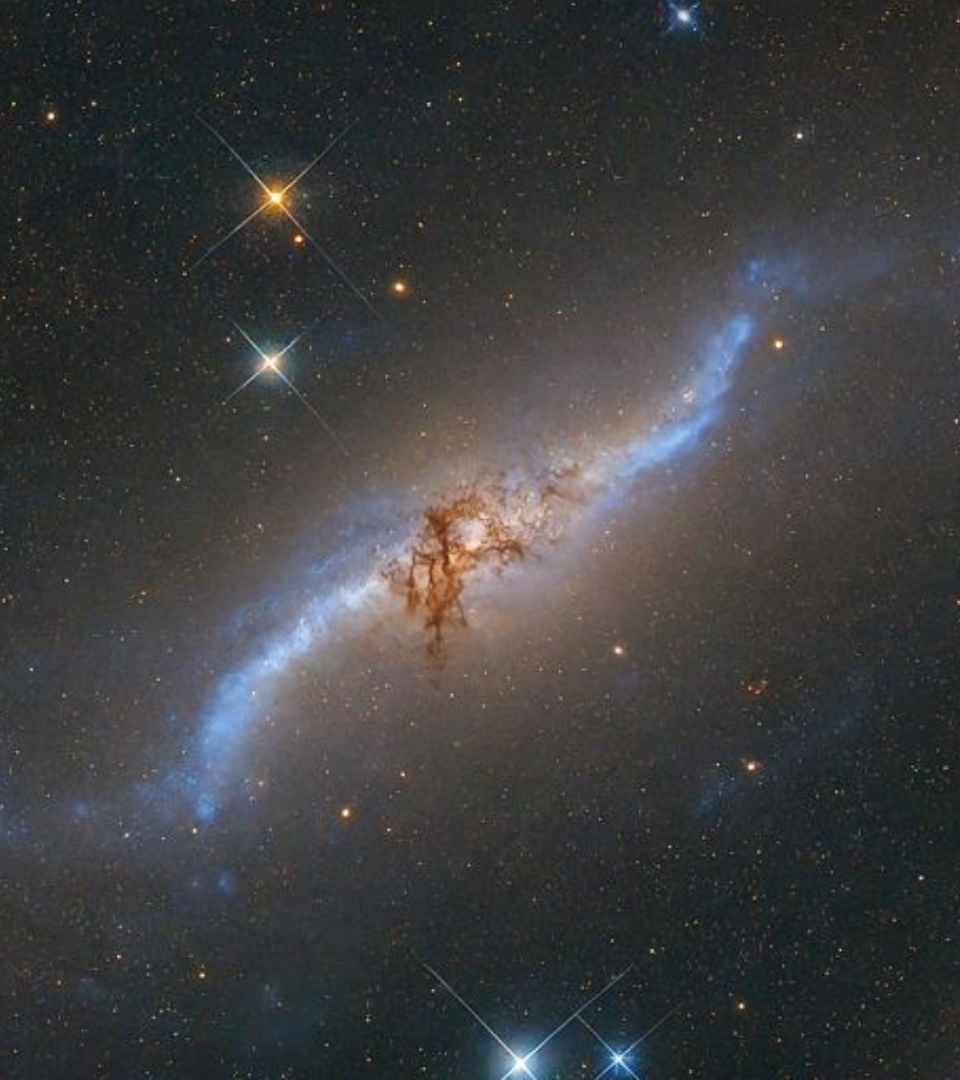




TERA



Logline: Five aliens from different worlds, unaware of their true identities, move in together with a human roommate in Long Beach, New York, unbeknownst to them, becoming the stars of a hit reality show light years away.



Visual Style

- A blend of documentary-style footage and scripted drama.
- A mix of Earthly and alien environments.
- A futuristic and visually striking aesthetic for the Katash Empire.

Tone

- A combination of comedy, drama, and science fiction.
- A balance of humor and heartfelt moments.

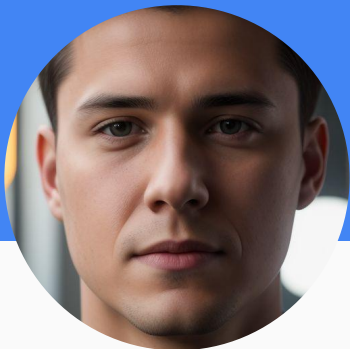
Target Audience

- Young adults and adults interested in science fiction, comedy, and reality television.

Themes

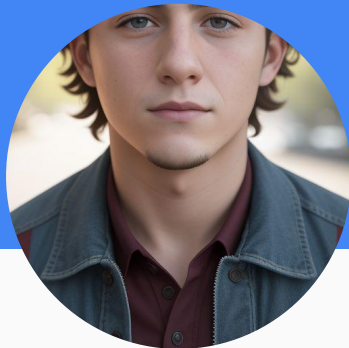
- Cultural Exchange: The exploration of different cultures and perspectives.
- Identity and Belonging: The search for one's place in the world.
- Manipulation and Control: The power of media and its impact on society.
- Friendship and Loyalty: The bonds formed between unlikely individuals.

Characters



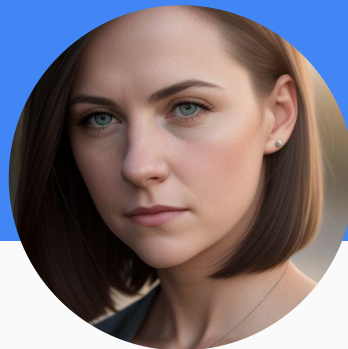
- **Xur Kre-Sun
(Greg)**

A Jo-Rumban intelligence gatherer tasked with sowing societal discord.



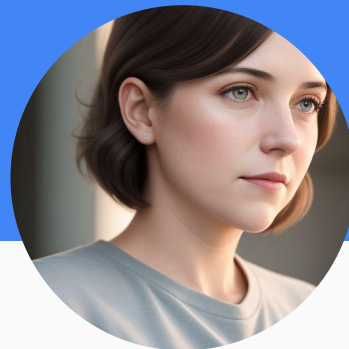
Dey Kon (Danny)

A gentle and curious alien with a deep connection to emotions.



Grum-Lock (Katie)

A stoic and disciplined alien with a hidden agenda.



Jamie Forell

A kind-hearted and resilient human with a strong sense of family.

1. Jamie, a struggling landlord, takes in Danny, a mysterious new roommate.
2. Katie, a tough and independent woman, joins the growing chaos of the apartment.
3. Greg, a suave and sophisticated man, becomes the third roommate, further complicating dynamics.
4. Jamie confides in her roommates about her financial struggles, leading to a potential Airbnb venture.
5. A mysterious fourth roommate moves in, adding an air of intrigue to the apartment.
6. Strange and unexplainable events begin to occur, raising suspicions among the roommates.

7. Danny's true alien identity is accidentally revealed to Jamie, changing their relationship.
8. Katie's past is hinted at as she exhibits strange behavior and disappears.
9. Greg's manipulative nature becomes evident as he tries to sabotage the roommates' plans.
10. The identity of the fourth roommate is revealed, shocking everyone involved.
11. A mysterious organization begins to show interest in the roommates, suggesting a larger cosmic plot.
12. Facing a growing threat, the roommates form an unlikely alliance to protect themselves.